

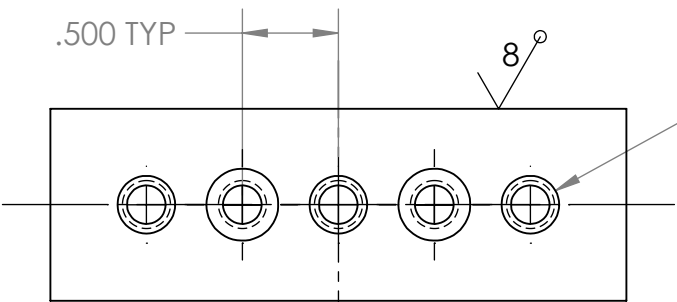
4

3

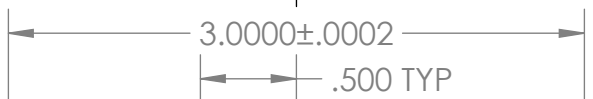
2

1

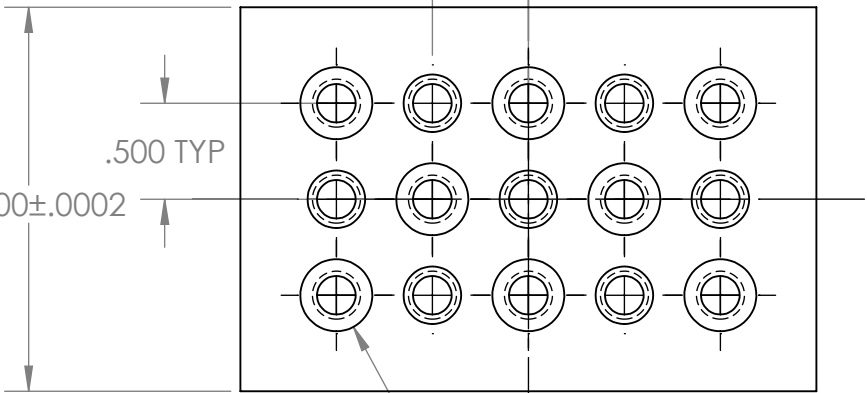
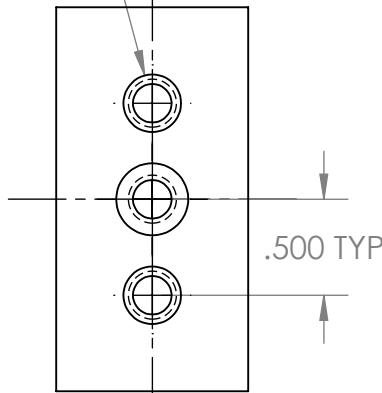
NOTES:
HEAT TREAT TO 58-60 HRC



5X \square ϕ .375 ∇ 1.75
1/4-20 UNC (H11 TAP) THRU
C-BORES ON ALTERNATING
SIDES AS SHOWN



3X \square ϕ .375 ∇ 2.75
1/4-20 UNC (H11 TAP) THRU
C-BORES ON ALTERNATING
SIDES AS SHOWN



15X \square ϕ .375 ∇ 0.75
1/4-20 UNC (H11 TAP) THRU
C-BORES ON ALTERNATING
SIDES AS SHOWN

TITLE:
123 SUPERBLOCK

UNLESS OTHERWISE SPECIFIED:
DIMENSIONS ARE IN INCHES
TOLERANCES:
FRACTIONAL \pm 1/16
ANGULAR: MACH \pm 0.5 BEND \pm 1
TWO PLACE DECIMAL \pm 0.005"
THREE PLACE DECIMAL \pm 0.002"

MATERIAL
A2 TOOL STEEL
FINISH
SURFACE GROUND

SIZE	DWG. NO.
A	001
SCALE: 1:1	WEIGHT:
SHEET 1 OF 2	

4

3

2

1

D

D

C

C

B

B

A

A

PROPRIETARY AND CONFIDENTIAL
THE INFORMATION CONTAINED IN THIS
DRAWING IS THE SOLE PROPERTY OF
MAKEITFROMMETAL.COM. ANY NON-
EDUCATIONAL
REPRODUCTION IN PART OR AS A WHOLE
WITHOUT THE WRITTEN PERMISSION OF
MAKEITFROMMETAL.COM IS
PROHIBITED.

4

3

2

1

D

D

C

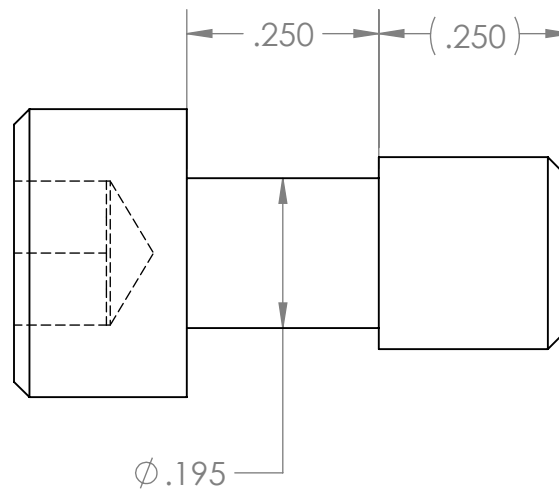
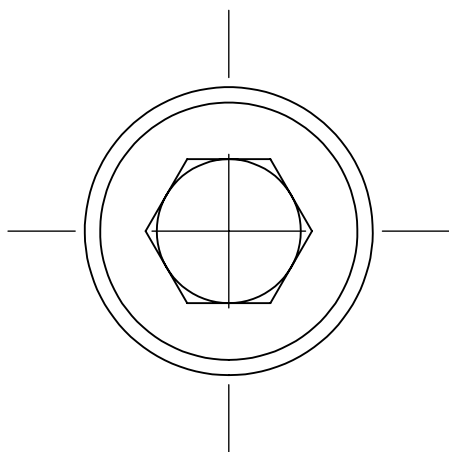
C

B

B

A

A



PROPRIETARY AND CONFIDENTIAL
 THE INFORMATION CONTAINED IN THIS
 DRAWING IS THE SOLE PROPERTY OF
 MAKEITFROMMETAL.COM. ANY NON-
 EDUCATIONAL
 REPRODUCTION IN PART OR AS A WHOLE
 WITHOUT THE WRITTEN PERMISSION OF
 MAKEITFROMMETAL.COM IS
 PROHIBITED.

UNLESS OTHERWISE SPECIFIED:

DIMENSIONS ARE IN INCHES
 TOLERANCES:
 FRACTIONAL $\pm 1/16$
 ANGULAR: MACH ± 0.5 BEND ± 1
 TWO PLACE DECIMAL ± 0.01 "
 THREE PLACE DECIMAL ± 0.005 "

MATERIAL
 1/4-20 X 1/2 UNC SHCS
 FINISH
 AS MACHINED

TITLE:
 123 BLOCK
 MODIFIED CAP SCREW

SIZE	DWG. NO.		
A	002		
SCALE: 4:1	WEIGHT:	SHEET 2 OF 2	

4

3

2

1