

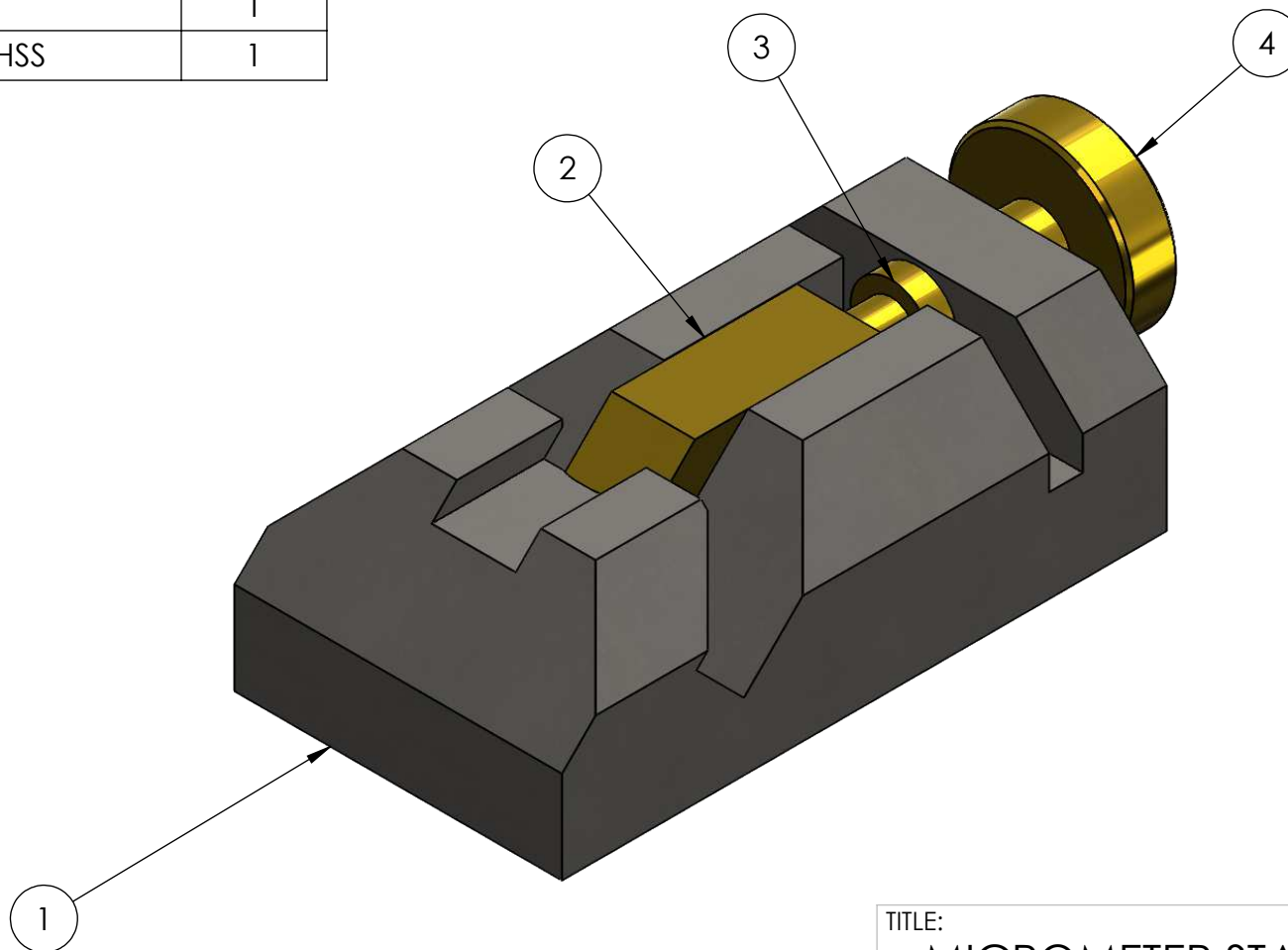
4

3

2

1

ITEM NO.	DESCRIPTION	QTY.
1	BLOCK	1
2	JAW	1
3	LEAD SCREW	1
4	KNOB	1
5	1/4-20 X 1" SHSS	1



UNLESS OTHERWISE SPECIFIED:

DIMENSIONS ARE IN INCHES
 TOLERANCES:
 FRACTIONAL $\pm 1/16$
 ANGULAR: MACH ± 0.5 BEND ± 1
 TWO PLACE DECIMAL ± 0.01 "
 THREE PLACE DECIMAL ± 0.005 "

MATERIAL

FINISH

TITLE:

MICROMETER STAND

SIZE

A

DWG. NO.

001

SCALE: 1:1

WEIGHT:

SHEET 1 OF 5

PROPRIETARY AND CONFIDENTIAL
 THE INFORMATION CONTAINED IN THIS
 DRAWING IS THE SOLE PROPERTY OF
 MAKEITFROMMETAL.COM. ANY NON-
 EDUCATIONAL
 REPRODUCTION IN PART OR AS A WHOLE
 WITHOUT THE WRITTEN PERMISSION OF
 MAKEITFROMMETAL.COM IS
 PROHIBITED.

4

3

2

1

D

D

C

C

B

B

A

A

4

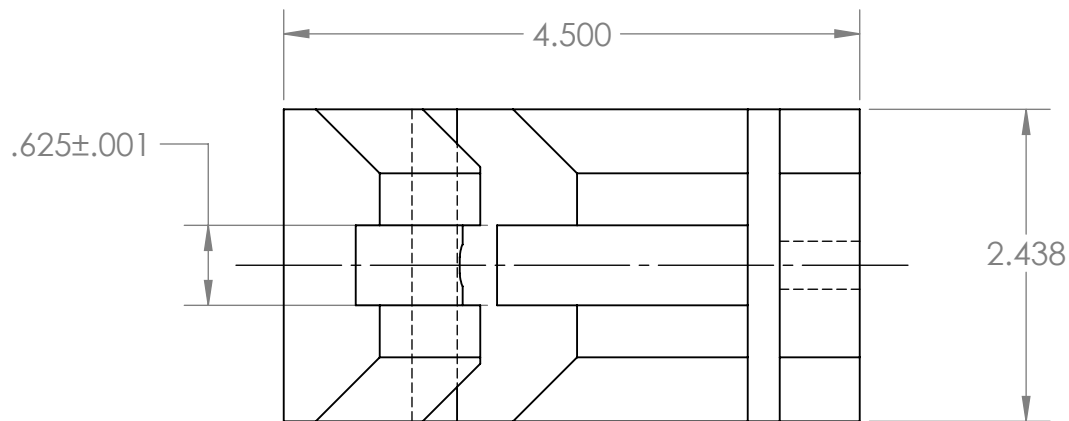
3

2

1

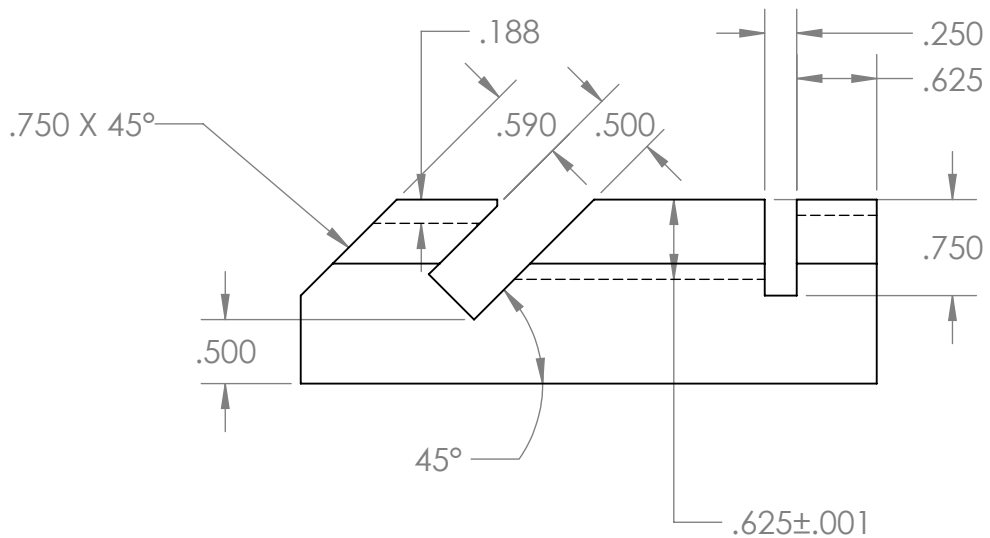
D

D



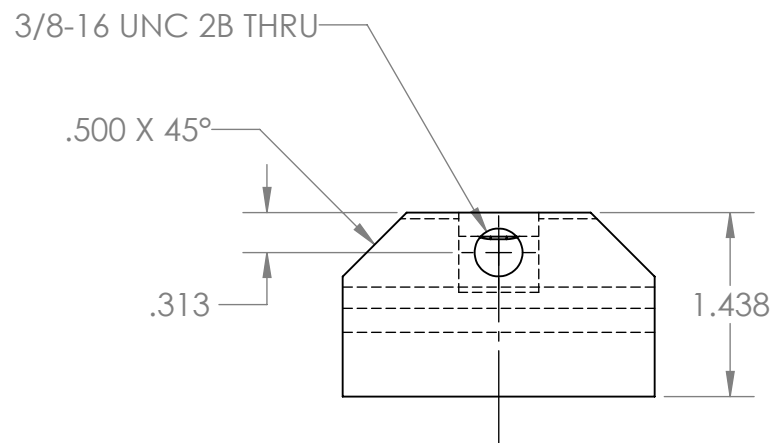
C

C



B

B



TITLE:
**MICROMETER STAND
 BLOCK**

UNLESS OTHERWISE SPECIFIED:
 DIMENSIONS ARE IN INCHES
 TOLERANCES:
 FRACTIONAL $\pm 1/16$
 ANGULAR: MACH ± 0.5 BEND ± 1
 TWO PLACE DECIMAL ± 0.01 "
 THREE PLACE DECIMAL ± 0.005 "

MATERIAL
STEEL

FINISH
AS MACHINED

SIZE	DWG. NO.
A	002
SCALE: 2:3	WEIGHT:
SHEET 2 OF 5	

PROPRIETARY AND CONFIDENTIAL
 THE INFORMATION CONTAINED IN THIS
 DRAWING IS THE SOLE PROPERTY OF
 MAKEITFROMMETAL.COM. ANY NON-
 EDUCATIONAL
 REPRODUCTION IN PART OR AS A WHOLE
 WITHOUT THE WRITTEN PERMISSION OF
 MAKEITFROMMETAL.COM IS
 PROHIBITED.

4

3

2

1

A

A

4

3

2

1

D

D

C

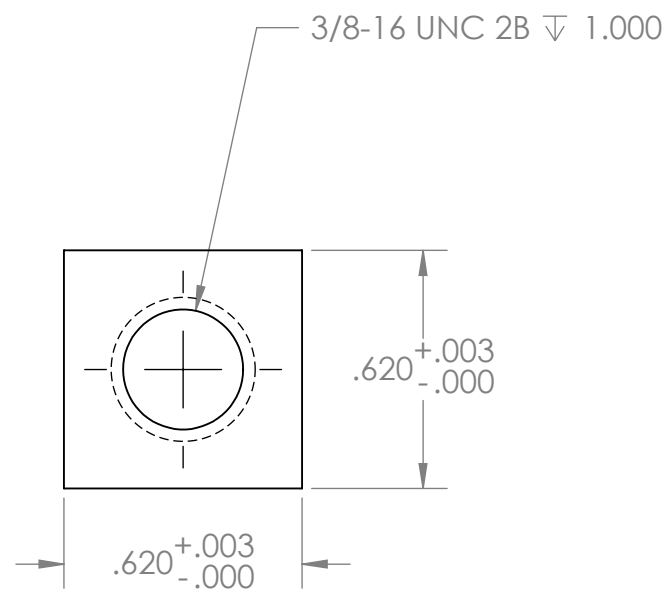
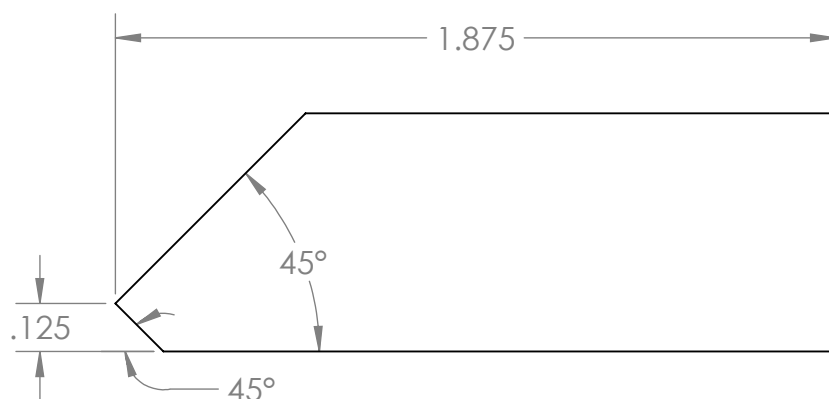
C

B

B

A

A



PROPRIETARY AND CONFIDENTIAL
 THE INFORMATION CONTAINED IN THIS
 DRAWING IS THE SOLE PROPERTY OF
 MAKEITFROMMETAL.COM. ANY NON-
 EDUCATIONAL
 REPRODUCTION IN PART OR AS A WHOLE
 WITHOUT THE WRITTEN PERMISSION OF
 MAKEITFROMMETAL.COM IS
 PROHIBITED.

UNLESS OTHERWISE SPECIFIED:
 DIMENSIONS ARE IN INCHES
 TOLERANCES:
 FRACTIONAL ±1/16
 ANGULAR: MACH ±0.5 BEND ±1
 TWO PLACE DECIMAL ±0.01"
 THREE PLACE DECIMAL ±0.005"

MATERIAL
BRASS
 FINISH
AS MACHINED

TITLE: MICROMETER STAND JAW			
SIZE A	DWG. NO. 003		
SCALE: 2:1	WEIGHT:	SHEET 3 OF 5	

4

3

2

1

4

3

2

1

D

D

C

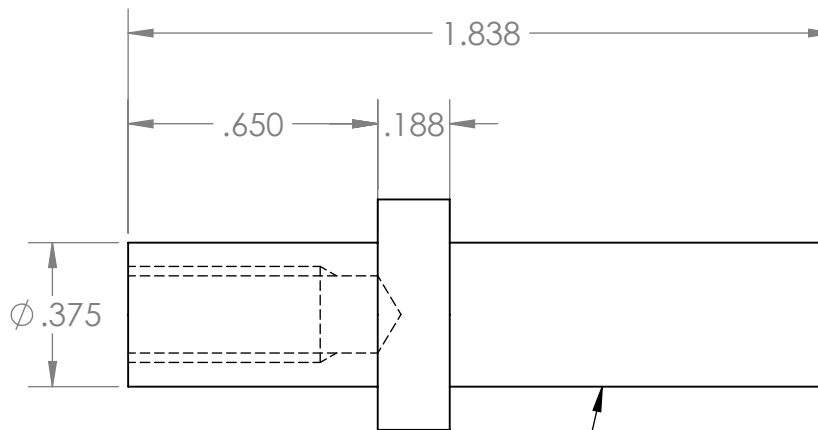
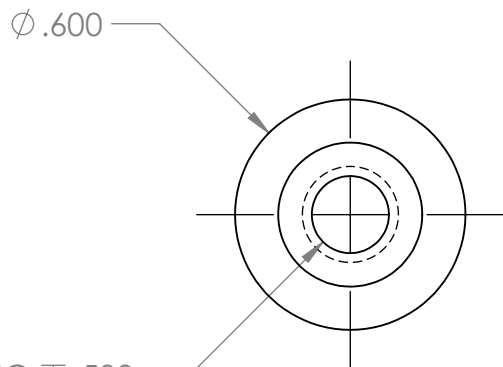
C

B

B

A

A



3/8-16 UNC 2A
U-CUT TO FLAT SHOULDER

PROPRIETARY AND CONFIDENTIAL
THE INFORMATION CONTAINED IN THIS
DRAWING IS THE SOLE PROPERTY OF
MAKEITFROMMETAL.COM. ANY NON-
EDUCATIONAL
REPRODUCTION IN PART OR AS A WHOLE
WITHOUT THE WRITTEN PERMISSION OF
MAKEITFROMMETAL.COM IS
PROHIBITED.

UNLESS OTHERWISE SPECIFIED:
DIMENSIONS ARE IN INCHES
TOLERANCES:
FRACTIONAL $\pm 1/16$
ANGULAR: MACH ± 0.5 BEND ± 1
TWO PLACE DECIMAL ± 0.01 "
THREE PLACE DECIMAL ± 0.005 "

MATERIAL	BRASS
FINISH	AS MACHINED

TITLE:
**MICROMETER STAND
LEAD SCREW**

SIZE	DWG. NO.
A	004
SCALE: 2:1	WEIGHT:
	SHEET 4 OF 5

4

3

2

1

4

3

2

1

D

D

C

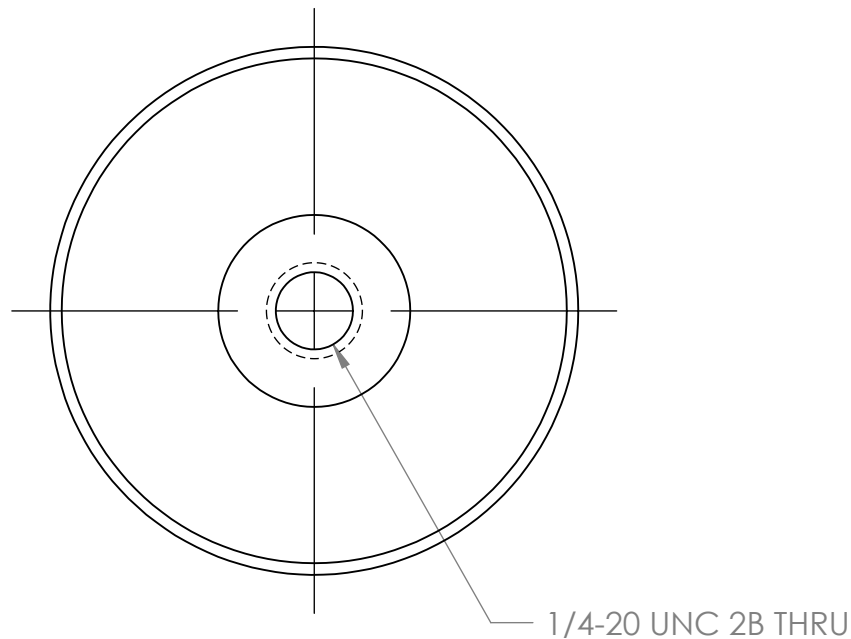
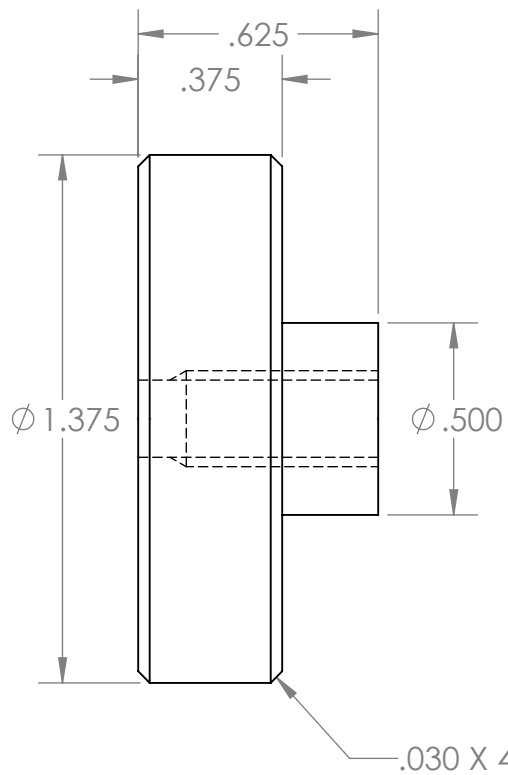
C

B

B

A

A



UNLESS OTHERWISE SPECIFIED:
 DIMENSIONS ARE IN INCHES
 TOLERANCES:
 FRACTIONAL ±1/16
 ANGULAR: MACH ±0.5 BEND ±1
 TWO PLACE DECIMAL ±0.01"
 THREE PLACE DECIMAL ±0.005"

MATERIAL: BRASS
 FINISH: AS MACHINED

TITLE:
**MICROMETER STAND
 KNOB**

SIZE: **A** DWG. NO.: **005**

SCALE: 2:1 WEIGHT: SHEET 5 OF 5

PROPRIETARY AND CONFIDENTIAL
 THE INFORMATION CONTAINED IN THIS
 DRAWING IS THE SOLE PROPERTY OF
 MAKEITFROMMETAL.COM. ANY NON-
 EDUCATIONAL
 REPRODUCTION IN PART OR AS A WHOLE
 WITHOUT THE WRITTEN PERMISSION OF
 MAKEITFROMMETAL.COM IS
 PROHIBITED.

4

3

2

1